



# Certificate of Analysis

QA SAMPLE - INFORMATIONAL ONLY

1 of 3

ICAL ID: 20190718-065  
Sample: 1907ICA3496.10302  
CBD Balance (mg Per softgel)  
Strain: CBD Balance (mg Per softgel)  
Category: Ingestible

Procana of California  
Lic. #  
18776 Blue Dream CSWY, UNIT 40- 40  
DESERT HOT SPRINGS, CA 92240  
Lic. #

Batch#:   
Primary Size:   
Total/Batch Size:   
Collected: 07/22/2019; Received: 07/22/2019  
Completed: 07/22/2019

Moisture <b>NT</b>	$\Delta 9$ -THC <b>ND</b>	CBD <b>7.95 mg/unit</b>	Total Cannabinoids <b>7.95 mg/unit</b>	Total Terpenes <b>NT</b>
Water Activity <b>NT</b>				

<b>Summary</b>	SOP Used	Date Tested	
Batch			<b>Complete</b>
Cannabinoids	SOP:003Extract	07/19/2019	<b>Complete</b>



Scan to see results

## Cannabinoid Profile

1 Unit = SOFT GEL, 0.63 g.

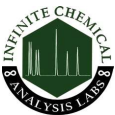
Analyte	LOQ	LOD	%	mg/g	mg/unit	Analyte	LOQ	LOD	%	mg/g	mg/unit
THCa	0.16	0.10	ND	ND	ND	CBDV	0.16	0.10	NR	NR	NR
$\Delta 9$ -THC	0.16	0.10	ND	ND	ND	CBN	0.16	0.10	ND	ND	ND
$\Delta 8$ -THC	0.16	0.10	NR	NR	NR	CBGa	0.16	0.10	ND	ND	ND
THCV	0.16	0.10	NR	NR	NR	CBG	0.16	0.10	ND	ND	ND
CBDa	0.16	0.10	ND	ND	ND	CBC	0.16	0.10	NR	NR	NR
CBD	0.16	0.10	1.262	12.62	7.95	<b>Total</b>			<b>1.262</b>	<b>12.62</b>	<b>7.95</b>

Total THC=THCa \* 0.877 + d9-THC; Total CBD = CBDa \* 0.877 + CBD; NR= Not Reported, ND= Not Detected, \*Reported by Dry Mass\*; \*analytical instrumentation used Cannabinoids:UHPLC-DAD, Moisture:Mass by Drying, Water Activity:Water Activity Meter, Foreign Material:Microscope\*

## Terpene Profile

Analyte	LOQ	LOD	%	mg/g	Analyte	LOQ	LOD	%	mg/g
---------	-----	-----	---	------	---------	-----	-----	---	------

NR= Not Reported thus no analysis was performed, ND= Not Detected thus the concentration is less then the Limit of Quantification (LOQ), \*analytical instrumentation used:HS-GC-FID-FID\*



Infinite Chemical Analysis Labs  
8380 Miramar Mall #102  
San Diego, CA  
(858) 623-2740  
www.infiniteCAL.com  
Lic# C8-0000019-LIC

*Josh M Swider*

Josh Swider  
Lab Director, Managing Partner  
07/22/2019

Confident Cannabis  
All Rights Reserved  
support@confidentcannabis.com  
(866) 506-5866  
www.confidentcannabis.com



This product has been tested by Infinite Chemical Analysis, LLC using valid testing methodologies and a quality system as required by state law. All LQC samples were performed and met the prescribed acceptance criteria in 16 CCR section 5730, pursuant to 16 CCR section 5726(e)(13). Values reported relate only to the product tested. Infinite Chemical Analysis, LLC makes no claims as to the efficacy, safety or other risks associated with any detected or non-detected levels of any compounds reported herein. This Certificate shall not be reproduced except in full, without the written approval of Infinite Chemical Analysis, LLC.